

# Instant Object-Level Search & Recovery

Rubrik provides granular object recovery for your Microsoft environments, eliminating the pain and complexity of doing a database rollback or restoration. Locate an email message, inbox, object, table or log from a backup and restore into a live running system without incurring downtime. With Rubrik, you unlock massive time and operational savings from foregoing the native processes to recover single items.



## SAVE TIME

Reduce the recovery time by restoring only the item vs. the entire database.



## SAVE MONEY

Avoid unnecessary storage provisioning and operational overhead with granular recovery.



## RECOVER WITH CONFIDENCE

Rest assured in recovering items. Avoid missteps in database rollbacks.

## ACCESS

- **Instant Access:** Select and mount the VM or application (database) directly onto Rubrik without provisioning any production storage.

## SEARCH

- **Granular Object Search:** Browse through the source data to locate the deleted item. Select the item (email message, inbox, object, table, or log) to restore. Preview the content before restoring.

## RECOVER

- **Global Real-Time Search:** Instantly search for files across all snapshots with predictive search that delivers suggested search results as you type.
- **Instant Off-Site Recovery:** Instantly recover VMs and files by mounting files directly on Rubrik. Recover instantly from any replica without data restoration to another endpoint.
- **Point-in-time Recovery for SQL Server:** Recover databases to any user specified point-in-time with intelligent log management.

## EMAIL SEARCH AND RESTORATION SIMPLIFIED

SIMPLE, YET POWERFUL. If you needed to find a single email message or mailbox in your backups, how long would it take? If the very thought of needing to locate and restore messages or mailboxes makes you cringe, Ontrack® PowerControls™, included with your Rubrik solution is the perfect solution. It reduces the time and cost of email restoration.

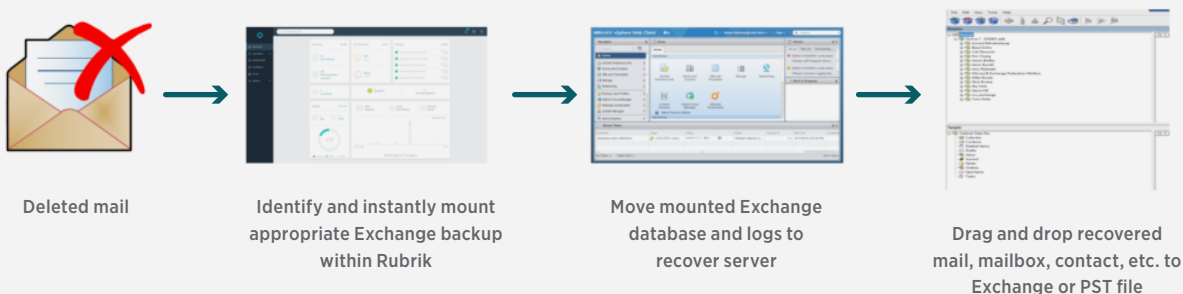
- Eliminate the need for brik-level backups or Exchange recovery servers
- Simply mount the Exchange database using Rubrik to a server running Ontrack® PowerControls™ and begin the recovery, no need to recover the entire database, just pick the content you need
- Search, recover, restore and export Exchange Server archived and recoverable items
- Restore items directly to your production Exchange server, Office 365 mailbox, or directly to a PST file from your backups
- Granularly search, collect, and export content in a forensically sound manner

## Common Reasons for Restoration

Ontrack PowerControls dramatically cuts the time and expense normally associated with email restoration. For example:

- You experience an Exchange server outage and you need to retrieve all messages since your last backup
- Find deleted messages or folders for internal clients
- A key employee has left your company and you are asked to recover messages that meet specific criteria
- Automate the copying of mailbox data when migrating to a new Exchange server
- Quickly identify and collect relevant information for litigation or regulatory requests

## Exchange Recovery Process



- Recovery or discovery request is received
- Administrator identifies appropriate backup image from Rubrik's management GUI and selects mount. The appropriate VM image is instantly mounted using Rubrik as a NFS data store.
- The VMDK/s holding the Exchange database and logs are mounted to the Ontrack recovery server
- Ontrack PowerControls for Exchange is launched, pointed at the newly mounted database and logs
- Ontrack PowerControls is then pointed at a Exchange, or a PST file
- Mail items can then be searched and recovered in a forensically sound manner by dragging and dropping them to the selected target
- Recover in minutes since the only data that is moved are the mail items that need recovering

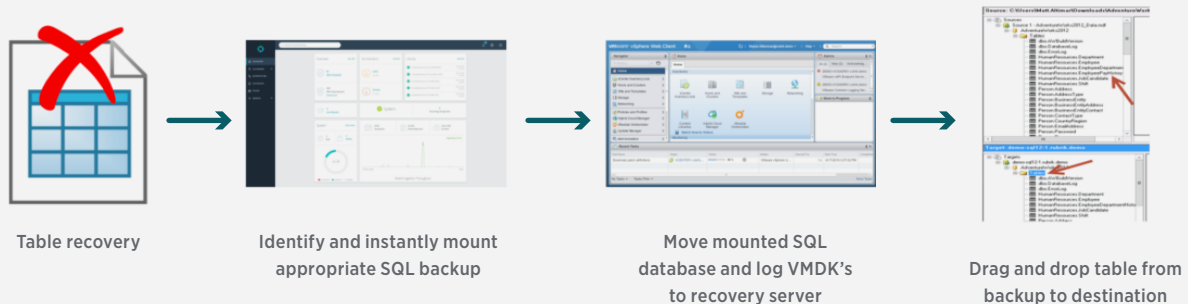
## SQL TABLE RECOVERY IN SECONDS

Start saving time and money when restoring SQL tables with Ontrack® PowerControls™

### Search and Restore Tables in Seconds

Ontrack PowerControls allows you search, preview, and restore tables from a variety of data sources, such as native SQL BAK files, offline MDF, LDF, and NDF files, or a storage tier snapshot from a SAN environment. No need to restore the entire database, saving hours of time in the process!

### SQL Table Recovery Process



- Recovery request is received
- Administrator identifies appropriate backup image from Rubrik's management GUI and selects mount. The appropriate VM image is instantly mounted using Rubrik as a NFS data store.
- The VMDK/s holding the SQL database and logs are mounted to the Ontrack recovery server
- Ontrack PowerControls for SQL is launched, pointed at the newly mounted database and logs
- Ontrack PowerControls is then connected to the target SQL server
- Tables can then be previewed and recovered by dragging and dropping them to the selected target
- Recover in minutes since the only data that is moved are the items that need to be recovered

## GRANULAR SHAREPOINT RECOVERY IN SECONDS

Ontrack PowerControls allows you to quickly and easily find, recover, and restore content – such as documents, lists, libraries, and folders – or entire SharePoint Server sites, eliminating the need to have an expensive restoration server available.

### Features

- Search by a variety of criteria, including keywords, subject, date, specific users, and file and attachment data
- Restore content such as documents, lists, libraries, and folders – or entire SharePoint sites
- Collect documents created by a specific person during a certain date range to meet legal requirements
- Find and extract individual items or sites and export them to new or alternate sites

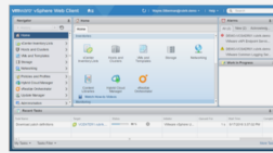
### SharePoint Recovery Process



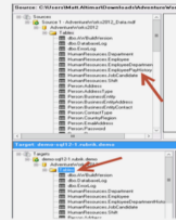
SharePoint recovery required



Identify and instantly mount appropriate SharePoint backup



Move mounted SharePoint database and log VMDK's to recovery server



Search, navigate and then drag and drop site/document/version from backup to destination

- Recovery request is received
- Administrator identifies appropriate backup image from Rubrik's management GUI and selects mount. The appropriate VM image is instantly mounted using Rubrik as a NFS data store.
- The VMDK/s holding the SharePoint SQL database and logs are mounted to the Ontrack recovery server
- Ontrack PowerControls for SharePoint is launched, pointed at the newly mounted database and logs
- Ontrack PowerControls is then connected to the target SharePoint server
- Sites or documents can then be searched, navigated, previewed and then recovered by dragging and dropping them to the selected target
- Recover in minutes since the only data that is moved are the items that need recovery

## DON'T BACKUP. GO FORWARD.

Want to see more? Contact [inquiries@rubrik.com](mailto:inquiries@rubrik.com) for a 15-minute demo. Visit [www.rubrik.com](http://www.rubrik.com) and follow [@rubrikInc](https://twitter.com/rubrikInc) on Twitter.



#### Global HQ

299 South California Ave. #250  
Palo Alto, CA 94306  
United States

1-844-4RUBRIK  
[inquiries@rubrik.com](mailto:inquiries@rubrik.com)  
[www.rubrik.com](http://www.rubrik.com)

Rubrik provides the industry's leading Cloud Data Management platform to accelerate how enterprises protect, manage, and secure data everywhere. Fortune 500 companies trust Rubrik's single platform to deliver data protection, search and analytics, archiving and compliance, and copy data management to deliver instant data access, cut TCO in half, and slash daily management time down to minutes.

Rubrik is a registered trademark of Rubrik, Inc. All other trademarks or service marks are the property of their respective holders and are hereby acknowledged. ©2016 Rubrik, Inc. All rights reserved.